



Presents

Brave New World The Musical

Book by
Ben Andron

Music by
Jonnie Rockwell
& John McDaniel

Lyrics by
Bill Russell

Based on the book by Aldous Huxley

with

Jason Edward Cook Robby Haltiwanger Marissa O'Donnell
Justin Matthew Sargent Robin Skye

and

Maria Buchanan Alice Eacho Sean Michael Jaenicke
Blake Logan Tyler McKenzie Kaylor Otwell
Billy Steeves Marthaluz Velez

Scenic Design
Andrew Mannion

Lighting Design
CJ Barnwell

Sound Design
Matt Nielson

**Production
Stage Manager**
Andrea Jess Berkey

Costume Design
George Martinat

Props Design
Jessica Tandy
Kammerud

**Technical
Director**
Catori Swann

Music Direction
Brad Simmons

Music Supervision, Arrangements & Orchestrations
John McDaniel

Choreography by
Ryan Kasprzak

Directed by
Thomas Caruso

This production was made possible in part by BNW DEVELOPMENTAL, LLC.

Production Staff

Production Stage Manager Andrea Jess Berkey*
Assistant Stage Manager Jessica Tandy Kammerud*
Technical Director Catori Swann
Assistant Technical Director/Audio Engineer Kenneth Horgan
Master Electricians Meghan Dougherty, Michael Lowery
Electricians CM Garrison, Kenneth Horgan, Steven Maurer,
Catori Swann, Brendan Warner
Assistant to Costume Designer Lauren Fortuna
Assistant to Props Patrick Brandt
Charge Artist Julie K. Ross
Run Crew Caroline Dischel, Kathryn Hudson, Jeffrey Reynard

Music Department

Music Supervision, Arrangements, Orchestrations John McDaniel
Music Direction Brad Simmons
Club Tracks Kevan Frost
Assistant to Music Director Aaron Price

NC Stage Staff

Artistic Director Charlie Flynn-McIver
Executive Director Steve Hageman
Audience Development Manager Allison Wilson
Box Office & Front of House Coordinator Nina Swann
Production & Facilities Coordinator Catori Swann

BNW DEVELOPMENTAL, LLC

Producer/Rights Holder Jonnie Rockwell
Executive Producer Nicole Kastrinos/Red Awning
General Manager Aaron Grant Theatrical, Inc.
Company Management Coordinator Jon Farber
NY Casting Daryl Eisenberg Casting



**Members of Actors' Equity Association, the Union of Professional Actors and Stage Managers in the United States, appearing under Small Professional Theatre SPT Tier 4 Contract.*



The Director is a member of the
**STAGE DIRECTORS AND CHOREOGRAPHERS
SOCIETY**, a national theatrical labor union.



† The Designers at this Theatre
are Represented by
United Scenic Artists • Local USA 829
of the International Alliance of Theatrical Stage Employees

CAST

(in alphabetical order)

Bernard.....	Jason Edward Cook*
John	Robby Haltiwanger*
Lenina	Marissa O'Donnell*
Mond.....	Justin Matthew Sargent*
Linda	Robin Skye*

Ensemble

Maria Buchanan*, Alice Eacho*, Sean Michael Jaenicke, Blake Logan*,
Tyler McKenzie*, Kaylor Otwell*, Billy Steeves*, Marthaliz Velez

There will be a fifteen minute intermission.

MUSICAL NUMBERS

Act I

“Year of Our Ford”	Mond, Bernard, Ensemble
“Orgy-Porgy”	Lenina, Bernard, Ensemble
“Gods of Our Fathers”	Ensemble
“To Be A Man”	John
“Who’d A Thought?”	Bernard, John
“Civilized”	Linda, Men
“Should I?”♦	John
“I Wanna Take You to The Feelies”	Lenina, Ensemble
“A Dangerous Lesson”	Mond, Ensemble

Act II

“Bernard is Back”	Bernard
“Where I’m From”	John, Lenina
“Shakespeare is Dumb”	Bernard, Foster, Hoover
“Was It Love?”♦	Mond, Linda
“What An Event”	Bernard, John, Ensemble
“Be A Woman”	Lenina, Fanny, Women
“What Are You Doing?”	John, Lenina
“Mommy’s Boy”♦	Linda, Ensemble
“Change Your Mind”	John, Bernard, Mond
“Nowhere”	John
“Finale”	Mond, Ensemble

♦*Music by Jonnie Rockwell*

Band

Music Director/Keyboards: Brad Simmons

Keyboard: Aaron Price

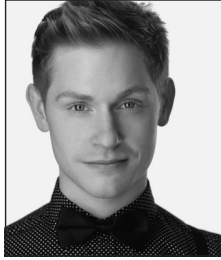
Guitars: Matt Kinne; Bass: Paul Leech; Drums: Mike Morel

*Denotes member of Actors’ Equity Association, the Union of Professional Actors and Stage Managers in the United States, appearing under Small Professional Theatre SPT Tier 4 Contract.

CAST



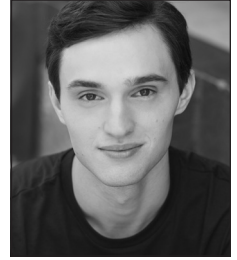
Maria Buchanan*



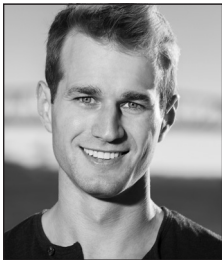
**Jason Edward
Cook***



Alice Eacho*



**Robby
Haltiwanger***



**Sean Michael
Jaenicke**



Blake Logan*



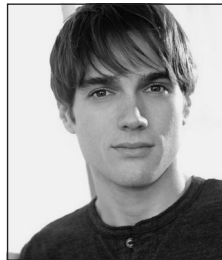
Tyler McKenzie*



**Marissa
O'Donnell***



Kaylor Otwell*



**Justin Matthew
Sargent***



Robin Skye*



Billy Steeves*



Marthaluz Velez

*Denotes member of Actors' Equity Association

CAST (in alphabetical order)

Maria Buchanan* (Ensemble) is happy to be back at NC Stage for this new musical! Previous NCSC credits include: *Boeing Boeing* (Gloria), *Live from WVL Radio Theatre: It's a Wonderful Life* (Mary Bailey/ Evelyn), and the workshop of Immediate Theatre Project's new radio play: *His Girl Friday*. Other regional credits include: *The Three Musketeers* (Constance), *Gypsy* (Miss Cratchit/Toreadorable), *The Fantasticks* (The Mute), *A Christmas Carol* (Belle), and *The Music of Michael Jackson* (all at Flat Rock Playhouse), the world premiere of Joan Cushing's musical *101 Dalmatians* (Missis), *Annie* (Grace Farrell), *9 to 5 The Musical* (Judy), and tours with Immediate Theatre Project and Theatre IV (Richmond, VA). Maria happily resides in Asheville with her favorite person and biggest supporter (Russell), and her favorite dog (Henry).

Jason Edward Cook* (Bernard) Theatre credits: *How The Grinch Stole Christmas* (Young Max, Old Globe); *Drop Dead Perfect* (Vivien, Off Bway); *The Underclassman* (Clive, Off Bway); *With Glee* (Kip, Off Bway); *Big River* (Huck, PlayMakers Rep, INDY WEEK Best Lead Performance); *Pope, An Epic Musical!* (Duncan, NYMF Outstanding Individual Performance); *Edith Can Shoot Things and Hit Them* (Benji, B Street); *Academy* (Pete, NYMF, Maltz Jupiter); *High School Musical 2* (Ryan, North Carolina Theatre); *Hello, Dolly!* (Barnaby, The Wick & Arkansas Rep); *Oliver!* (Dodger, WPPAC); *A Little Night Music* (Henrik), *Beauty and the Beast* (Lefou) & *Grand Hotel* (Erik, Maine State Music Theatre); *The Producers* (Leo), *All Shook Up* (Dennis) & *Chicago* (Mary Sunshine, SurfFlight); National Tour of Stephen Schwartz' *Captain Louie*. Film credits: *Hits* (Sundance 2014) and *Rising Stars*.

Alice Eacho* (Ensemble) is grateful to be back at NC Stage after playing Suzanne in *Don't Dress for Dinner*. Alice works in TV/film and commercials around the Charlotte and Atlanta areas. She is a proud mother to her 3 year old daughter, Zalea. Some credits include Marianne in *The Music Man*, Ginger in *Gilligan's Island the Musical* with Dawn Wells and Barry Williams, and a soloist at Carnegie Hall's Ninth Annual Vocal Jazz Festival. Much gratitude to NC Stage and the producers, cast, and crew of this exciting new project *Brave New World!*

Robby Haltiwanger* (John) is thrilled to be making his NC Stage Company debut in this incredible production! Favorite credits include *Rock of Ages* (Drew), *GHOST the Musical* (Carl), *The Who's Tommy* (Tommy), *Fiddler on the Roof* (Perchik), and *Jesus Christ Superstar* (Jesus). Thanks and love to family, friends, Liz, and Bloc.

Sean Michael Jaenicke (Ensemble) Regional: *Rocky Horror* (Rocky), *A Chorus Line* (Bobby), *The Drowsy Chaperone* (Robert), *The Producers* (Carmen), *La Cage* (Phaedra) *You're A Good... (Dir/Choreo)*. He has a BS from UNC-Pembroke and an MFA from Tulane University, both in musical theatre. So grateful for all the wonderful theatre North Carolina has to offer! Thanks to the endless support of my Mom, Dad, Audrey, Gary, my friends and family, and the wonderful team of BNW and NCSC!!

*Denotes member of Actors' Equity Association

Blake Logan* (Ensemble) A recent transplant from Los Angeles, Blake is thrilled to work with the incredibly talented, welcoming cast, production team and crew of BNW and wishes to thank Charlie and everyone at NC Stage Company for providing such a wonderful, unique opportunity! When not onstage, he can be found hiking the beautiful trails of the Upstate with his border collie Bolt, singing with the band at Unity of Greenville, and creating beautiful habitats for birds, bees and other wildlife. Twitter: @actorBlakeLogan; www.imdb.me/BlakeLogan

Tyler McKenzie* (Ensemble/Dance Captain) is a Long Island native & graduate of WCU with a BFA in Musical Theatre and was last seen in the ensemble of *Mamma Mia!* Broadway, National Tour, and Bogotá, Colombia companies. Love & thanks to Mom, Dad, CJ, friends & family, TPG, and mentors for their unconditional love and support. www.tylermckenzie.net Twitter: @TylerMcKenzie

Marissa O'Donnell* (Lenina) is stoked to be a part of *Brave New World!* Marissa originated the role of Teen Fiona in Broadway's *Shrek The Musical*, and made her big screen debut costarring with Jane Fonda and Elizabeth Olsen in "Peace, Love & Misunderstanding," directed by Bruce Beresford ("Driving Miss Daisy"). Graduating this year from Pace University's BFA-Musical Theater program, her credits include multiple productions and developmental readings including Chess in *We are the Tigers* (Over the Moon Productions), Emmy in *Fable* and Stacy in *Illa: A Hip Hop Musical* (NYMF), and Heather in *American Idiot* (Schimmel Center). Marissa is a proud member of AEA and SAG-AFTRA, and is represented by Abrams Artists. She would like to thank the cast, crew and creative team for making her feel right at home in Asheville! www.marissa-odonnell.com

Kaylor Otwell* (Ensemble) is thrilled to be a part of this exciting world premiere of *Brave New World!* She is originally from Birmingham, AL, and attended the Jefferson County Academy of Theatre & Dance through high school there. She went on to get her degree in Theatre from the University of Alabama, where she was a member of the theatre honor society, Alpha Psi Omega, as well as multiple choirs on campus. After graduating, she spent several years as the lead singer/songwriter for her band The Tin Cans, and as a worship leader and original songwriter for her church. Some favorite past theatre credits include: Molly (*Ghost*), Cosette (*Les Miserables*), Elizabeth Proctor (*The Crucible*), Sandra Bloom (*Big Fish*), Cinderella (*Into the Woods*), and Rose Stopnick (*Caroline or Change*). Kaylor would like to thank all those in Chattanooga and Birmingham who have been so supportive of her journey up to this point!

Justin Matthew Sargent* (Mond) Starred as Peter Parker in *Spiderman: Turn Off The Dark* (Broadway), as Drew in *Rock Of Ages* (Broadway), and was in the original cast of *Bonnie And Clyde* (Broadway). TV: *Royal Pains*, *Mr. Robot*, *De-located*. Justin has appeared regionally in *West Side Story*, *Jesus Christ Superstar*, *My Life is a Musical*, and *Pippin*. Justin holds a BFA from the University of Central Florida. Many thanks to Beth Rosner, Stone Manners Salners, Celine, and the entire team of *Brave New World!*

Robin Skye* (Linda) Has just finished a run at The Public Theater in New York City in *Southern Comfort* (Melanie) with Tom Caruso and Ryan Kasprzak. Broadway and National Tours-Parade, *Les Miserables* (Three companies), *Sunset Boulevard*, *Cyrano-The Musical*, Broadway-*The Big Band Years*. Off-Broadway- *The Butter and Egg Man* (Atlantic Theater), *Cactus Flower*, *A Doll's Life*, *Mata Hari*, etc. Regional Theater-Williamstown, Barrington Stage, the Eugene O'Neill, Goodspeed, Hartford Stage . TV-*The Affair*, *The Divide*, *The Wire*,

*Denotes member of Actors' Equity Association

The Tony Awards, *The Wizard Of Oz*(live from Avery Fisher Hall), *Third Watch*, *Soaps*. Film-*ITHACA*, (Meg Ryan, dir.), *Beautiful Creatures*, *Freedom Writers*, *Living Out Loud*, (Richard Lagravenese, dir.). Robin can be heard on the cast albums of *Parade*, *Mata Hari*, *Breakfast at Tiffany's*. Robin co-wrote her debut album *House of Love* which is available on iTunes. Robin also co-wrote the song *With You* for the 2013 film *Postman Pat*.

Billy Steeves* (Ensemble) is a New York City based actor and excited to step into this *Brave New World* in Asheville! Selected regional credits include *Joseph... Dreamcoat* (Joseph), *The Full Monty* (Keno), *La Cage Aux Folles* (Angelique), *The Little Mermaid* (TUTS), *Spamalot* (u/s Galahad), *Jekyll & Hyde*, *Evita*, and *Cinderella*. Billy has opened for American Idol's Taylor Hicks and been featured at Broadway Sessions at the Laurie Beechman Theatre in NYC. Proud member of Actor's Equity. Thank you to the cast and creative team. My love and thanks to Tony and my family (both Steeves and Lance). www.billysteeves.com

Marthaluz Velez (Ensemble) is excited to make her NC Stage Company debut in the premiere of this fun and captivating musical adaptation. She is a current student at Western Carolina University pursuing a BFA in musical theatre, and will graduate in the spring of 2018. Recent new works she has participated in include the reading of *Resident Alien* with book & lyrics by Katya Stanislavskaya under the direction of Terrence Mann, the collegiate premiere of *Pop! Who Shot Andy Warhol?* with book by Maggie-Kate Coleman & lyrics by Anna K. Jacobs, and the reading of *Rogue Burgundy Crush* written by Tommy Trull. Other university credits include *Elemeno Pea* directed by DV Caitlyn, *42nd Street* directed by Terrence Mann, and *Peter Pan, or The Boy Who Would Not Grow Up* directed by Brenda Lilley. When not in school, Marthaluz resides in her hometown of Gastonia, NC. She would like to dedicate this performance to her unbelievably supportive mother, and Prisy, the most adorable shih-tzu on the planet.

Andrea Jess Berkey* (Production Stage Manager) is so pleased to be revisiting the NC Stage family after many years away. Previously at NC Stage: *Like Mother, What The Butler Saw*. Off Broadway: Soho Rep, MCC, Cherry Lane, Manhattan Theatre Club, *O Earth*, Maurice Hines' *Tappin Thru Life*, *Charles Francis Chan Jr's Exotic Oriental Murder Mystery*, *Consent*, *The Last Starfighter*, *The Fabulous Life of a Size Zero*, *joy*, *Fame on 42nd Street*. Festivals: NYMF, FringeNYC, NAMT, MITF. Regional: Flat Rock Playhouse, Williamstown Theatre Festival, Actors Theatre of Louisville. Touring: *Blue's Clues Live!*, *TheatreworksUSA*. Numerous BC/EFA events. Proud member of Actor's Equity Association.

Jessica Tandy Kammerud* (Assistant Stage Manager/Props Design) graduated from UNC Asheville with a BA in Drama. Her favorite past projects, as Stage Manager for NC Stage, include: *Jeeves Intervenes*, *Someone Else*, *4000 Miles*, *Pericles*, *Parallel Lives*, *Hedwig and the Angry Inch*; for ITP: *Live from WVL Radio Theatre: It's a Wonderful Life*; for Ensemble Theatre Company: *Jacob Marley's Christmas*; for Boiler Room Theatre: *How to Succeed in Business Without Really Trying*. Her Assistant Stage Manager credits for NCSC include *Amadeus* and *Rosencrantz and Guildenstern are Dead*. She has served as Props Designer for numerous productions at NC Stage, including *Who's Afraid of Virginia Woolf*, *Someone Else*, *4000 Miles*, *Pericles*, *Annapurna*, *Stalking The Bogeyman*, *THIS*, *R. Buckminster Fuller...*, *In The Next Room or The Vibrator Play*, *Boeing Boeing*, and *Angels in America*, and for ITP, *Venus in Fur*, *The Glass Menagerie*, and *Dead Man's Cell Phone*. Thanks go to her parents for their unending support.

*Denotes member of Actors' Equity Association

CREATIVE TEAM

Ben Andron (Book) Andron's first play *White's Lies* was produced Off-Broadway in 2010. Other plays include *Broken Snow* (drama) & *Breaking Bobby Stone* (comedy). Ben worked closely with Disney TV Animation developing the animated series "Hunachi" for Jetix/ABC Family & wrote numerous episodes for the BBC animated series "Friends & Heroes." As a writer/producer of motion picture marketing, Ben has been creatively involved in the releases of major Hollywood films, including *Batman v Superman*, *Inherent Vice* (named Best Trailer of 2014), the Harry Potter films, and recently won two Clio Grand Key Awards for his work on *Black Mass* and *The Lego Movie*.

Jonnie Rockwell (Music, Rights Holder) is the grandchild of renowned early 20th Century Czech opera composer & folklorist, Leoš Janáek. Jonnie Rockwell studied music & art at Skidmore, is a classically trained pianist and a preeminent synthesizer programmer. She toured for ten years with several progressive orchestras & rock bands, prior to conceiving the musical adaptation of *Brave New World*. She received critical acclaim for composing the music for off-Broadway's 2014 *The Anthem*. She is also a successful & well-respected physician on Manhattan's Upper East Side. Dr. Rockwell's love of Huxley and the idea of a future free from disease, poverty and old age inspired her to go on this theatrical journey.

John McDaniel (Music, Music Supervision, Arrangements, Orchestrations) is a Grammy and two-time Emmy Award winning Composer, Music Director, Arranger, Orchestrator, Theatrical and Record Producer and is the Artistic Director of the Tony Award winning O'Neill Theater Center's Cabaret and Performance conference. Broadway credits include *Bonnie and Clyde* (Drama Desk Nomination, Best Orchestrations), *Catch Me If You Can*, *Brooklyn* (Producer and Orchestrator), *Annie Get Your Gun* (Grammy Award, cast album Producer), *Taboo*, *Chicago*, *Grease*, *Patti LuPone on Broadway and Company* – the Original Cast in Concert at Lincoln Center. John won his Emmy Awards for *The Rosie O'Donnell Show* and was nominated for 5 consecutive years for Best Music Direction. Recent credits include Maltby & Shire's *Waterfall* both in Los Angeles and Seattle and *The Daughter of the Regiment* at Opera Theatre of St. Louis. John has enjoyed collaborations with Cab Calloway, Shirley MacLaine, George Burns, Al Jarreau, Tyne Daly, Joel Grey, Carol Burnett, Frederica von Stade, Betty Buckley and most recently, Bette Midler. He has been guest conductor at many Symphony Orchestras including San Francisco, Indianapolis, Utah, Buffalo, Colorado, Baltimore, Phoenix and his hometown St. Louis Symphony. He holds a BFA in Drama from Carnegie Mellon.

Bill Russell (Lyrics) is an internationally produced playwright, lyricist and director. Mr. Russell's musicals have been performed on and off-Broadway, in the Fringe and West End of London and all over America and the UK, including the Kennedy Center, La Jolla Playhouse, Old Globe Theatre and the Edinburgh Festival. Internationally his shows have been seen in Brazil, Japan, Israel, Germany, Thailand, Canada, Australia and Sweden. He received Tony Award nominations for the book and lyrics for the original production of *Side Show* which enjoyed a critically acclaimed Broadway revival in 2014 and five Drama Desk nominations including Best Revival of a Musical. Other shows include *Pageant*, *Elegies for Angels*, *Punks and Raging Queens*, *The Last Smoker in America*, and *Lucky Duck*. This summer, *Unexpected Joy* will have its world premiere on Cape Cod. He wrote lyrics for the Radio City Music Hall *Christmas Spectacular* and the official theme for the Gay Games. In 2015, three original cast albums of his shows were released. Mr. Russell received honorary doctorates from Morningside College and the Boston Conservatory. In September he will be inducted into the South Dakota Hall of Fame. He has shared decades of good times and theater-going with his now husband, Bruce Bossard. More at www.billrussell.net.

Thomas Caruso† (Director) most recently directed the musical *Southern Comfort* by Dan Collins and Julianne Wick Davis at The Public Theatre in New York (Lortel Award nomination, OCC Award nomination); *Dynamo: Seeing Is Believing* at the Hammersmith Apollo in the West End of London and its subsequent UK Tour; *Academia Nuts* (NYMF, Best New Musical and Excellence in Direction Awards). He also directed the National Tour of the Broadway musical *Matilda* as well as the National Tour of the Broadway musical *Ghost*. Other NYC & regional directing credits include numerous new plays and new musicals at Bay Street, Rattlestick, The Play Company, EST, SPF, New York Stage & Film, Penguin Rep, Studio Arena Theatre, 59E59, Barrington Stage, CAP21, Theatreworks, Palo Alto, among others. Broadway Associate Director credits: *Matilda*, *Ghost*, *Follies*, *Bombay Dreams*, *Master Class* and *Mamma Mia!* Thomas was awarded the California Film Award for Best Direction for his direction of his film *Zombie*, based on the novella by Joyce Carol Oates.

Ryan Kasprzak (Choreographer) Recently choreographed the critically acclaimed *Southern Comfort* at the Public Theater with director Tom Caruso. NBC's *Smash* (Asst. Choreographer). Nat'l Tours: *Billy Elliot* (Associate Resident Choreographer / Dance Captain), *Fosse* (Dance Captain). TV: Fox's *So You Think You Can Dance*, commercials for Hershey's, White House Black Market, Sun Drop. Creator with multi Drama Desk Award nominated Parallel Exit: Physical Comedy Theater. Their show *Exit Stage Left* recently played variety theaters throughout Germany and other productions have been featured at the New Victory Theater, Joyce SoHo, Lincoln Center Institute, Queens Theatre, and Cos Festival in Spain. Movement for David Blaine's *Real or Magic*. NYMF award winners *Academia Nuts*, *Cloned*, *Volleygirls*. Recently performed *The Bandstand* (Dance Captain) at Paper Mill Playhouse. Marymount Manhattan College professor and alumnus. Love and gratitude to LL, SGK, LDC, and fam. www.ryankasprzak.com

Brad Simmons (Music Director) is a Broadway, film & stage Music Director based in New York City. Projects include *Lysistrata Jones*, *Mr & Mrs Fitch with John Lithgow*, *Clear*, *Hood*, the film *Hello Again* and the hit late-night show *Backstage at 54 Below*, where NPR named him "The Man." Brad has worked with Broadway's leading ladies Audra McDonald, Tonya Pinkins, Alice Ripley, Carolee Carmello, Rebecca Luker, Donna McKechnie, Leslie Uggams, Martha Plimpton, Tovah Feldshuh and recording artists Sandi Patty and The B-52's Kate Pierson. He regularly performs at Birdland, Joe's Pub, Rockwood Music Hall, Metropolitan Room and Feinstein's/54 Below either as a solo artist (In the Company of Strangers: The Music of Paul Simon) or sharing the stage with Christina Bianco, Von Smith, Erich Bergen or most recently with Matt Baker and Eric Yves Garcia in *Piano Men*. Other career highlights include the films *Camp* and *The Last Five Years* and composing *A Woman Onstage*, *A Dickens of a Carol* and *A Kiss from Alexander* with Stephan DeGhelder. Lastly, Brad proudly leads the Junior Fellows program at The Eugene O'Neill Theater Center's Cabaret & Performance Conference, now in its seventh season. More info at www.thebradsimmons.com

Aaron Price (Assistant to Music Director) is excited to be working in live musical theatre once again! Past projects with NC Stage include Music Direction for *Hedwig and the Angry Inch*, music composition and sound design for *A Wrinkle in Time*, and sound design for *A Midsummer Night's Dream*. Aaron founded Asheville's Collapsible Recording Studios in 1999 and currently works for the Asheville Symphony's MusicWorks program at Hall Fletcher Elementary, fostering emotional intelligence through musical theatre.

†Denotes member of Stage Directors and Choreographers Society, a national theatrical labor union

Kevan Frost (Club Tracks) was born in England and moved to Nigeria, West Africa, at the age of 7. His time in Africa gave him a fond love of all things percussive and melodic. He moved back to the UK at the age of 14 and joined 5 bands, playing a different instrument in each. At 16 he was known as ‘the best hi-hat player in London’ and went from studio to studio playing hi-hats on many 80’s hits! Playing lead guitar for Des’ree was Kevan’s big break, and he toured extensively promoting her first album. While being a member of her band, he bumped into Boy George at a recording studio. George needed some harmonies on a song and that session formed the now renowned songwriting partnership between them. Kevan and George wrote the original songs for the West end and Broadway Musical *Taboo*. Kevan played and produced every instrument on the UK cast album and also co-produced the American cast album with John McDaniel. Kevan has been Music Director for Boy George, Mica Paris, Shalamar, Rose Royce and a musician for Howard Jones, Kim Wilde, Mark Ronson and Des’ree to name but a few. He also writes for International Artists and produces music for television. Kevan’s music has been Tony and Drama Desk nominated.

Andrew Mannion (Scenic Design) last designed for NCSC in 2008 for their production of *Doubt: A Parable*. Andrew is the Assistant Professor of Scenic Design at Western Carolina University. Upcoming designs for WCU’s 2016-17 season include the world premiere of *Resident Alien* written by Katya Stanislavskaya, *In the Soundless Awe*, *King Lear* and *Hair*. Andrew has designed for various companies including the 14th St. Y, Playhouse on the Square, Mt. Baker Theatre, Flat Rock Playhouse, Stella Adler School for Acting, and 440 Studios. He also assisted on Broadway with *The Nance* (Tony Award for Best Set Design), *Orphans*, *The Big Knife*, *Kung Fu*, *The Last Ship*, and *The Realistic Joneses*. From 2013 to 2014, he was the resident scenic design associate at Encores! Off-Broadway.

CJ Barnwell (Lighting Design) designs lighting for theatre, dance, corporate events and weddings around the southeast. Starting with *All is Calm* in December 2015, CJ has designed a number of shows at NC Stage. Currently Head of Lighting and Projections at Flat Rock Playhouse, CJ has designed a number of shows there including *James and the Giant Peach*, *How to Succeed in Business...*, *Always Patsy Cline*, and *Million Dollar Quartet*. See his other current and upcoming designs at www.CJLights.com. After graduating from the College of Charleston with a Bachelor in Theatre Technology, he went on to pursue various technical and design positions around the country and abroad including Lighting Design for *Aristocats* at Stages St. Louis as well as being Master Electrician there for 4 years from 2007-2010 and Assistant Technical Director for Footlight Players at the Piccolo Spoleto Festival.

Catori Swann (Technical Director) is delighted to be working on this superb piece. He is the Production and Facilities Coordinator here at NC Stage Company, and the Technical Director for most of our mainstage shows. Previous TD credits include *Jeeves Intervenes*, *Someone Else*, *4000 Miles*, *Parallel Lives*, *Annapurna*, *Jacob Marley’s Christmas Carol*, *Rounding Third*, *The Understudy*, *Angels In America*, and others. A graduate of Catawba College Theatre Department, Catori puts every bit of his liberal arts degree to use, acting as master electrician, carpenter, welder, stage manager, tour manager, sound and video engineer, lighting designer, and actor. He recently opened a production company, Deus Ex Machina, where he offers all of the above services to the Western North Carolina area. He now resides in Mills Gap with his beautiful wife Nina, his boy Iago, and newborn daughter Veruca. He would like to thank Charlie and Angie for placing their faith in him yet again!

Kenneth Horgan (Assistant Technical Director/Audio Engineer) is a recent transplant to the Asheville area from New York. He has over 23 years’ experience in the theatre, event, and film industries. Recent projects with NC Stage include *Someone*

Else and *Jeeves Intervenes*, serving as both assistant technical director and props master, and as the Technical Director for *Who's Afraid of Virginia Woolf* (Immediate Theatre Project). He would like to thank his wonderful wife Lynne, without whom life would be meaningless. I love you baby! Soma for everyone!

Matt Nielson ‡ (Sound Design) Previous NC Stage credits include *Someone Else*, *The Book Club Play*, *Stalking the Bogeyman*. Off-Broadway and Regional sound design and composition credits include The Public Theatre/NYSF, Cincinnati Playhouse in the Park, Milwaukee Repertory Theatre, Repertory Theatre of St. Louis, Portland Center Stage, Delaware Theatre Company, Philadelphia Theatre Company, Barrington Stage Company, Arena Stage, Ford's Theatre, Shakespeare Theatre Company, Studio Theatre, Woolly Mammoth Theatre Company, Round House Theatre (Helen Hayes Award, *A Prayer for Owen Meany*), Signature Theatre DC, Olney Theatre Center, The Contemporary American Theatre Festival, The Kennedy Center, The Library of Congress, The Smithsonian Institution, Forum Theatre (Helen Hayes Award, *The Illusion*), Catalyst Theater Company (Helen Hayes Award, 1984), Theatre Alliance (Helen Hayes Award, *The Wonderful World of Dissocia*). Film and TV credits include *Elbow Grease*, *The Hero Effect*, *Death in Time*, *From Hell to Here*, *The Magicians*, Spike TV, Delivery.com, EPIX Drive-In, v05, UFC on FOX, NBC Sports. He is a producer, sound designer and composer with audio post-production house Sound Lab Studios. Samples can be heard online at CuriousMusic.com

George Martinat (Costume Design) has previously designed costumes at NC Stage including *Jeeves Intervenes*, *Someone Else*, *Don't Dress for Dinner*, and *Parallel Lives*. He also designed the wigs for *Amadeus*. George wants to thank NC Stage for providing excellence in performance that continues to inspire and enhance his mind, heart, and design. This summer he will return to Flat Rock Playhouse as First Hand/stitcher for their 2016 season.

CM Garrison (Production Assistant) is a technical intern and FOH manager at North Carolina Stage Company. Currently gaining experience to earn a M.A. in Stage Management, CM's past professional jobs include: Touring Stage Manager for *Live From WVU Radio Theatre: It's A Wonderful Life* (Immediate Theatre Project), Running Crew for *Jeeves Intervenes* (NCSC), Production Assistant for *Pericles* (NCSC), Stage Manager for *The King and I* (Parkway Playhouse), ASM for *Venus in Fur* (ITP) and ASM for *Who's Afraid of Virginia Woolf* (ITP). Cheers for another chance to work with a great company, and thanks to Mom and Dad Garrison for their support (and food).

Red Awning (Executive Producer) a division of Jujamcyn Theaters, provides a full range of executive producing services, under the direction of Nicole Kastrinos. Broadway: *A Night With Janis Joplin*, *Soul Doctor*, *Forever Tango*, *Manilow on Broadway*, *Clybourne Park*, *Lombardi*, *The Miracle Worker*, *Finian's Rainbow*, *A Bronx Tale*, *August Wilson's Radio Golf* Regional: *Chasing Rainbows*, *Breaking Through*, *Ghost Brothers of Darkland County*.

Aaron Grant (General Manager) is an independent General Manager and Producer who has been active in the theatre for over a decade. Favorite projects include 2010's *White's Lies* at New World Stages (which finished a successful run in Michigan in 2013), 2014's critically acclaimed off-Broadway production of *The Anthem*, the national tour of *Almost Heaven: Songs of Jon Denver*, *The Screwtape Letters*, *Grumpy Old Men: The Musical*, *Minimum Wage*, *Stormy Weather: The Lena Horne Musical* and Elizabeth Swados' *Rachel and Leah*. Most recently, Aaron managed the Ensemble for the Romantic Century's newest piece, *Anna Ahkmatova: The Heart Is Not Made of Stone*. Projects in development include *Breaking Bobby Stone*, *Ghostlight: The Musical*, and *Songbird*. In 2013 Aaron opened AARON GRANT THEATRICAL, INC., prior to which he was General Manager at Kelvin Productions with the late Vincent DeMarco.

‡Denotes member of United Scenic Artists

Jon Farber (Company Management Coordinator) has company managed off-Broadway: *Around the World in 80 Days*, *The Anthem*, *Sanctuary*, *dEAD dOG pARK*, *Anna Akhmatova: The Heart Is Not Made Of Stone*. Selected NY Readings/Labs/Workshops: *Brave New World*, *Chasing the River*, *First Love*, *Pip's Island*, *Breaking Bobby Stone*, *Broken Snow*, & *Truth, Lies, Diana*. Works at Aaron Grant Theatrical. Previous: The Weinstein Company, Viacom, Barbara Lieberman Productions. MFA in screenwriting from Chapman University. Wrote: *Sister Husbands* (play) and *A Starchy World* (short film).

Daryl Eisenberg Casting is a full service casting office for film, theater, television, commercials, and new media. Theater credits include: *Who's Your Baghdaddy*, *That Bachelorette Show*, *White's Lies*, *The Anthem*, *The Dodgers*, *Speakeasy Dollhouse/The Brothers Booth*, *Around The World In 80 Days*, *My Big Gay Italian Wedding*, *Miss Abigail's Guide...*, *My First Time*, *The Awesome 80s Prom*, *F#%king Up Everything*, *Altar Boyz*, Folger Theatre, Norwegian Cruise Line, Davenport Reading Series, Aaron Grant Theatrical, Stageworks Media, Gotham Stage Company, and countless festivals, readings, and workshops. Film credits include: *Cheerleader*, *EVOL*, *Hypebeasts*, *Sleep* (HBO). TV credits include: Casting Associate on *Gossip Girl* (Warner Bros/The CW) and *Cashmere Mafia* (Sony/ABC). Web/New media includes: *Limetown*, *The Bunny Hole*, *Pipture: Characters*. Graduate of NYU's Tisch School of the Arts. Member of Casting Society of America. www.decasting.com. @DECasting

SPECIAL THANKS

David Hopes, Training Partners, Hawthorne at the Peak,
Rafe Carlotto & Sound Associates, Inc., Jill & Smitty Flynn, Kim MacQueen,
Nina Troy, Willie Repoley, Erach Screwvala, Charlene Scharf, Betsy Tankersley,
Erik McDaniel, Diana Wortham Theatre, Flat Rock Playhouse,
Western Carolina University School of Stage and Screen,
Extended Stay America – Asheville, Asheville Dry Cleaning,

Enterprise is the preferred rental car company of NC Stage

Aubrey Adams, Susanna Allen, Caitlin Amos, Ally Beans, Elizabeth Berra,
Kayla Breneman, Sal Bucci, Celeste Cahn, Nathan Cohen, Lauren Connolly,
Marina Colonna, Mary-Kate Costa, Tim Croner, Andy Friedland, Jenny Gorelick,
Brian Hart, Erin Heatly, Jaclyn Hergott, Jennifer Jacobs, Joshua Jordan,
Samara Josephson, Tracy Kaczorowski, Zach Kaufer, Eitan Kling-Levine, Ava
Langford, Moira McCormick, Kierstyn Moran, Emily Pinkos, Joel Piper,
Shoshana Robuck, Austin Tracy, Mary Sands, Jeremy Sickles, Ross Silver

Jason Baruch Esq., Anthony J. Cantalupo,
Dr. Jeffrey Jamieson, Jim Kierstead,
Joseph Ferrer, Don Farber Esq.

WCQS
COMMUNITY • CULTURE • CLASSICAL

PIANO  **EMPORIUM**

2015-2016 ANNUAL FUND

North Carolina Stage Company has received support from so many individuals and businesses in its 14 year history that it would be impossible to list them all in a playbill. Below are the contributors who have given in the last eighteen months.

PRODUCER

North Carolina Arts Council
O. Darwin & Myra N. Smith

CO-PRODUCER

Tiger Baron Foundation
Renee & Harold Levine
The Shubert Foundation
Russell Smith

BENEFACTOR

The Beattie Foundation
Blue Ridge Pictures / Ray Mata
BMW of Asheville
Shawn Gallagher & Charles Gershon
Jan & Nat Justice
Robert Seiler
Songbird Theatricals

SUSTAINER

Lucy & Kirk Borland
The Chaddick Foundation
David W. Erwin & MaryAnn Kiefer
Lynn & Bob Kieffer
Jill & Joe Lawrence
Jill & Smitty Flynn
Jocelyn & Jim Stewart

PATRON

Anonymous
Bert Bach
The Baechtold Family
Jacque Allen & Barbara Benisch
Joel Berkowitz & Deborah Bohan-Berkowitz
Ms. Barbara Blomberg
Sandra Bradbury
Jane Bramham & Cam Collins
Julia Courtney
John Cram
Donna & Jim Cutting
Libby & Michael de Caetani
Mario Dicesare
Lynne Diehl
Fran & Allan Fedor
Kendall Wright Cliver Charitable Fund of
The Community Foundation of WNC
Claude William Gaddy Endowment,
a component fund of the North
Carolina Community Foundation
Jonas Gerard Fine Art
Bernice & Arnold Green
Terrie & Dale Groce
Steve Hageman
Dorothy Hamill
David Hopes
Joyce & Frank Horn
Suzanne Jones
Henry & Flora Joy
Karl Katterjohn & Kathryn Liss
Jackie & Allen Lalor
Jill & Joe Lawrence
Cecily Mango & Harry Wilkinson
Jerry & Bill McAninch
Lucy Oliver & Tom Rightmyer
Shirley & Karl Quisenberry
Ronna & Rob Resnick
Dot & Joel Rosenberg
Barbara & John Shaw
Caroline & Darrell Strong
Nancy & William Thompson

PARTNER

Marla & Joel Adams
Mary & Jack Anderson

Ruth Baker
Marie Bauer
Nancy Cain
Dennis A. Clements & Martha Ann Keels
Marianne Coté
Robert DeBrecht
Jean & Bob Formento
Genevieve & Donald E Fortuna
John Gardner
Valerie & Hal Hogstrom
Carolyn Hubbard
Tom Jeffords
Elizabeth Jones & John Ellery
Peter L. & J. Diane Jones
Amy & John Kelso
Pamela & Robert King
Peter Krull & Melissa Booth
Anne & Robert Louttit
Ms. Kim MacQueen
Nancy & Thomas Maher
Kimberly McGuire & James Samsel
Lisa & Tom McIver
Robin Meyers
Bob & Martha Pierce
Nancy Polansky
Elizabeth Pou
Rob Pulleyn
Rick Ricordati
Sabrina & Isaac Rockoff
LiB & Joe Shore
Ben Stepp
Liz Swann
Valerie & Paul Taylor
Elizabeth & Thomas Tracy
Howard Troxler & Lynn Casey
Pam & Bill Winkler

SUPPORTER

Linda & John Alford
Pat & Bill Bastian
Lauren Bianchini
Diana & George Bilbrey
Stephanie Biziewski
Norma Bohm
James Bond
Lynn Brofman
Anne & Nathan Burkhardt
Ms. Claudia Carter
Ann Cowden
Joyce Davis & Alan Cutter
Saundra & Richard Cuyler
Mary Fond Daughtridge
Bill Dorfman
Beth Ellers
Lina Evans & Ira Sloan
William & Carol Falender
Curry First & Patricia Robertson
Ms. Hedy Fischer
Jennifer Gatti & Stephanie O'Brien
in memory of Andrew Edward Crabtree
Betty & Al Gumpert
Dr. Hal Hemme
Joscelyn Williams Hill
Susan Holden
Robert Hollis
Alicia & Art Hulse
Eileen & Chuck Hutchison
RoseLynn & Gene Katz
Phyllis & Jesse Key
Pam & David Lane
Christine & Mark Lenderman
Lorraine Marina
Carol & Hugh McCollum
Kayren & Jack McKnight

SUPPORTER (continued)

Donna & Fred Meyer
 Barbara & Bill Norman
 Joanne Parker, PhD & Thomas Parker, MD
 Connie Patterson
 Gloria & Dan Pincu
 Gordon Pirie
 Anne Rawson
 Sarah & Willie Repoley
 Sally Rhoades
 Susan & Jeffrey Robbins
 Tom Roberson
 Judy Rose & Stuart Stein
 Peter Saputo
 Tory Schmitz & Mike Dingus
 Nancy & Sam Schuman
 Susan & Bill Sewell
 A.K. & G.K. Smy
 Mara Sprain & John Bates
 Janice & Bob Van Dine
 Luxe Asheville LLC - Tracy Veteto
 Carolyn Wallace
 Debbie & Mark Ward
 S Miller Williams & Constance Williams
 Suzanne Wodek

FRIEND

Lois & Jack Adair
 Nancy Alexander
 Lillian & Max Alexander
 Mary Anne & Victor Allwein
 Carol Anders
 Becky Anderson
 W. Edward & Rebecca Anderson
 Pat & Ed Argue
 Pat Atteberry
 Geneve & Jeremy Bacon
 Jean & Gaylord Baker
 Jessica Bauman
 Janine Baumgartner
 Wendy & Joseph Bell
 Janet Belleme
 Nancy & Charles Benedict
 Lee Berger
 in memory of Dr. Fred Berger
 David Berkey
 Patsy Beyer
 Telia Blackard
 Anne Bonnyman
 Christine Borgfeldt
 Deron Boyles
 Lynn & Allen Brailsford
 Peter Brezny
 Rita Nilsen & Carl Brickman
 Elizabeth Bridgers
 Marcia Bromberg
 Kathy Bross
 Dr. Sandra R. Brown
 David & Lin Brown
 Kermit Brown
 Marilyn & Bill Brown
 Janis Bryant
 Norma Buckingham
 Elke & Herb Buder
 Duncan Burr
 Tom & Linda Bushar
 Sandee & Milt Butterworth
 Sandra & Jones Byrd
 James Cahill
 John B. Campbell
 Linda & Fred Cardina
 Alice Carey
 Carol & John Carrano
 Laura & Phillip Casey
 Nancy Cash & Charles Reid
 Ellen Chelmiss
 Don & Sharon Christensen
 Susan Claassen
 Patty & Gary Coleman
 Alberto Colonia & George Hunker
 Kay Cooke
 Susan & David Cooper
 Sara Coplai
 Carol & Carlton Craig

Dr. & Mrs. Charles E. Cummings
 Paula DeLorenzo
 Patty & Joe DeStefano
 Leslie & Jurgen Dierks
 Tom & Karen Dill
 Michael Doerner
 Joyce & Laurence Dorr
 DOWNTOWN ASHEVILLE RESIDENTIAL NEIGHBORS
 Sarah Dumont
 Saundra Duncan
 Erna Earle
 Wally Eastland
 Karin Eckert
 Nancy & Ron Edgerton
 Maureen Edick
 Kaaren McNulty
 Beth & Peter Ely
 Day Ann & Bruce Emory
 Barbara A. Field
 Robin Fortuna
 Betsy Frazier
 Ellenor & Paul Frellick
 Lissa Friedman
 Sonya Friedrich
 Jan & Pete Friedt
 Judy Futch & Paul Smith
 Barbara & Dan Gerber
 Wayne Gildroy
 Adina Goodman
 Barbara & Jeffrey Gould
 Patricia Green
 Michael Grillot
 Gerry Grimm
 Ann & Stanley Grygiel
 Jytte & Mikkel Hansen
 Cheryl A. Harper
 Dick & Bonnie Hartel
 Virginia Hayes
 Laura & Timothy Hemker
 R. Gail Heninger
 Roger & Nancy Hill
 Lee & Carole Hodges
 Rena & Steve Hoffman
 Bruce & Elnor Holcombe
 Sandy Houts
 Martha N. Howell
 Ann & Sam Hubbard
 Evie & Paul Hultberg
 Richard Hurley
 Roshni Hurt
 Steve Jarrell
 Beth Jezek
 C. Robert Jones & Wes Heath
 Marjorie K. Justus
 Sally & Jim Kamman
 Jody & Barry Kammerud
 Jessica Kammerud
 Leah Karpen
 Jean Karpen
 Edward Kaufmann
 Kathleen & John Keefer
 Alice & George Keller
 Elizabeth Keteltas
 Anne Kimmel
 Susan & Dan Kincaid
 Jan King
 Andriette Kinsella
 Stuart Kirsner
 Susan L. Konig
 Linda Kooiker
 Kotara Sudio LLC
 Abbie & Harvey Kreider
 Peter Laine
 Peter & Bebe Landis
 Laura & Doug Lane
 Nancy Lane & Paul Newell
 Milissa & Mike Lang
 Katie Langwell & Lance Ball
 Lynn Lederer
 Barbara & Steve Lehrer
 James M. Lesko
 Rebecca Lewis
 Amanda Leslie Livingston & Andrew Livingston
 Meg Macleod

FRIEND (continued)

Susan Maley
Lee Anne & Peter Mangone
Gail & Ronald Manheimer
Sylvie Martin
Missy Stewart & Richard Maschal
Ray Mata
Nancy & John Mathewson
Ms. Barbara McCoy
Geeta & Bob McGahey
Tina & John McGuire
Kaaren McNulty
Manny & Denise Medeiros
Louisa & Jon Menick
John Menkes & Honor Moor
Daniel Mermin & Stephanie Citron
Margie Metz
America's Camp Foundation
Hans Meyer
Libby & Jim Mijanovich
Celia H. Miles
Martha & Thomas Mills
Rebecca Morris & Evan Becka
Jerome Mrowca & Lois Carlson
Jennifer Mullendore
Jorge Munoz
Frances Myers
Nancy & Stan Nachman
Barbara & James Neal
Linda Nelson
Marianne Newman
Barbara Norris
William & Nancy Norton
Stephanie P. O'Brien
Kevin O'Connor
Clark & Anna Olsen
Sarah Oram & Steve Grabenstein
John Orr
Amie & Graham Paul
Anne Paul
George Peery & Mary Miller Stair
Kathi Peterson
Ross Peyser
Pat Phillips
Bobbi Powers
Kathleen Quinlan
Angie & Duff Rardin
In honor of Angie Flynn-McIver for her birthday
Carole & Tom Repici
Sheela Repoley
Samuel Riter
Mary Ritter
Paula Robbins
Charles N. Robinson & Jean B. Franklin
Penny & John Rose
Carole & Bill Roskind
Kay Rouse
Deborah Miles & Marc Rudow
David Russell
Lisa Yoffee & Steven Samuels
Mary Lou & Nelson Sartoris
Elizabeth & Frieder Schulz
Jan Schwartz
Charlotte & Syd Self
Roxanne & Jim Semon
Babbie & Waid Shelton
Anita & Allan Shields
Connie Silver
Nancy Smith
Graham Smith
Muriel Smith
Cindy Soell
Maria Lourdes Solares
Juanita & Howard Spanogle

Peg Steiner
Beth Stickle & Charlie Schoenheit
Jeffrey Stillson
Charles L. Stohr
Irene & Michael Stoll
Diana Stoll
Pat & Robert Stolz
Elizabeth & Emma Stoneberg
Claire Strupinsky
Jane & Bill Swafford
Judy & Bob Swan
Dr. Alicia Parker Sweatt
Jeannie & Art Swygard
Marla F. Tambellini
John & Kathy Tempelaar-Lietz
Shirley Tenney & Paul Merriken
Joseph Thompson
Michael M. Thompson
Mieko & James Thomson
Sara Timmons
Robert Tomasulo & Michael DiPaola
Michelle Tracz
Ken Triwush
John Van Etten
Catherine Vandenberg
Robert Vose & Mary Lou Mayer
Judi Wagner
Susan Waldman & Bill Swarts
Barbara Walk
Patricia & James Wann, Jr.
Terry Ward
Janice & Anthony Warren
Richard Wasch & Karen Ziff
Melissa Hunsucker & Todd Weakley
Marlyn & Jim Weekly
Joyce & Bob Weinberg
Susan & Lloyd Weirnerman
Yvette Wessel
Gretchen & Bennett Whipple
John White
Jason Williams
Greg Walker Wilson
Ellen & Michael Winner
Debbie Wood
Doris & Richard Young
Cliff Yudell
Cheryl Johnson & Eugene Zimbalkin
Jill Zimerman

IN MEMORY OF JANCY DORFMAN

Lynn Brofman
Nancy Cain
Jan & Pete Friedt
The Goodman-Lipman Family Foundation
Adina Goodman
Steven R. Hageman
Lee & Carole Hodges
Roshni Hurt
Eileen & Chuck Hutchison
Peter L. & J. Diane Jones
Jill & Joe Lawrence
The Mannis Family
America's Camp Foundation
Barbara & Bill Norman
William & Nancy Norton
Kevin O'Connor
One Million Cups - Asheville
Ross Peyser
The Riter Family
Carole & Bill Roskind
Claire Strupinsky
John & Kathy Tempelaar-Lietz
S Miller Williams
Pam & Bill Winkler

.....
We make every effort to thank our many generous donors. If your name is not listed or listed incorrectly, please let us know. Due to space limitations, only donations above \$25.00 are listed.

SUPPORT NC STAGE 2015-2016 SEASON

Close your eyes and imagine an empty stage lit by a single bulb standing in the middle of the floor. That's how every production at NC Stage begins. Our talented lighting, sound and costume designers create the environment for each playwright's vision and actors bring life to the characters under the leadership of the play's director, starting from scratch, every time. The professional fees, fabric, lighting gels, props and stage sets are original, and expensive. We can't cover those costs with ticket income alone. We need the generous support of our friends. Consider making a contribution to the NC Stage Annual Fund. We'll put your gift to good use creating outstanding experiences of classical and contemporary theatre and serving students by integrating theatre techniques into their classes. Your money will stay right here in our community where it has an economic impact that benefits all of us. A contribution of any amount makes a difference. Thanks.

GIVING CATEGORIES

Producer	\$20,000 and Above
Co-Producer	\$10,000 - \$19,999
Benefactor	\$5,000 - \$9,999
Sustainer	\$2,500 - \$4,999
Patron	\$1,000 - \$2,499
Partner	\$500 - \$999
Supporter	\$250 - \$499
Friend	up to \$249

I WOULD LIKE TO MAKE A GIFT TO THE NC STAGE ANNUAL FUND

Enclosed is my gift of:

\$1,000 \$500 \$250 \$100 \$50 Other amount \$ _____

Name (s): _____

Address/City/State/Zip: _____

Phone/ Email: _____

Payment Enclosed:

Check (*payable to NC Stage Company*)

VISA MasterCard Discover or American Express

Card # _____

Exp. Date _____ CV Code _____

Signature _____

Mail to: North Carolina Stage Company, 15 Stage Lane, Asheville, NC 28801
or make your contribution online at our secure website: www.ncstage.org.

Thank You!